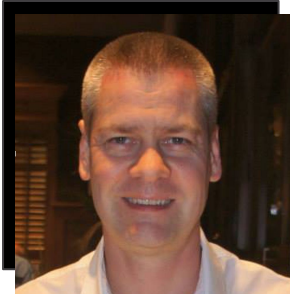


ThoughtSpot Insight Hours

July, 2025



Speakers



Paul Froggatt
Director, Technical
Architects
ThoughtSpot



Eliza Dee
Customer Success Manager
ThoughtSpot
[Host](#)



Vikram Agnihotri
Senior Solutions Consultant
ThoughtSpot



Katrina Berke
Solutions Engineer
ThoughtSpot

Three pillars of **Insights Hours**

**Product
spotlight**

**How-to
ThoughtSpot**

**Community
thread**

- Hosted **last Thursday of every month** by ThoughtSpot's GTM team
- Register for **one or all sessions**
- Ask your questions using Q&A for the **Community thread** discussions

Agenda

01 Introductions

Hello from speakers and what we'll cover today

02 10.10 ci release updates

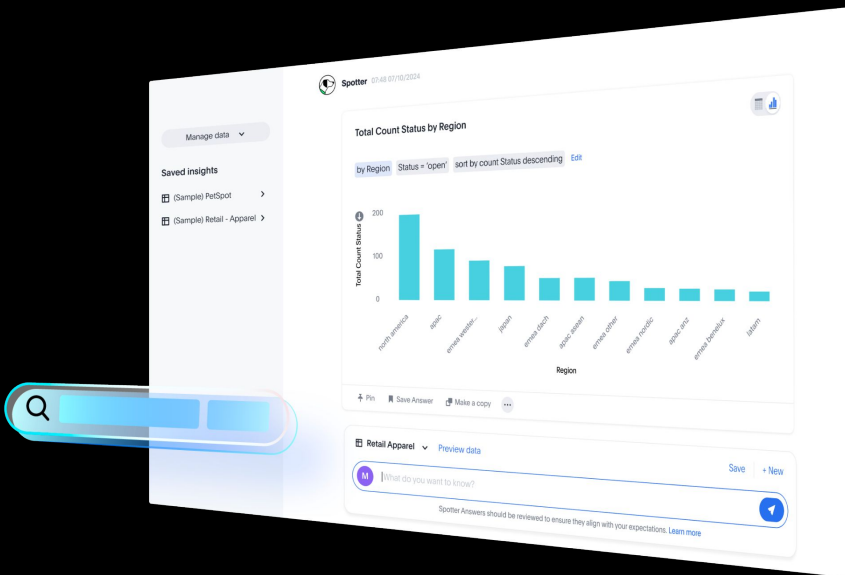
Katrina Berke

03 MCP - walkthrough and demo

Vikram Agnihotri

04 Wrap up & next steps

Eliza Dee



NEW

10.10 cl release highlights



10.10 cl release highlights

Spotter:

- Feedback and learnability for Spotter Agent - **Beta**
- Spotter Conversations Liveboard available in all Orgs
- Spotter on Slack - **now available in EU region**
- Progressive model filters - **Beta**
- Orgs support for ThoughtSpot plug-ins
- Query tags for Snowflake connections



Progressive model filters - Beta

Previously:

any filter defined at the Model (or Worksheet) level applied to every query based on that Model or Worksheet.

Now:

you can define which table a filter applies to in the Model or Worksheet TML. Once defined, the filter only applies to queries that include columns from that specific table.

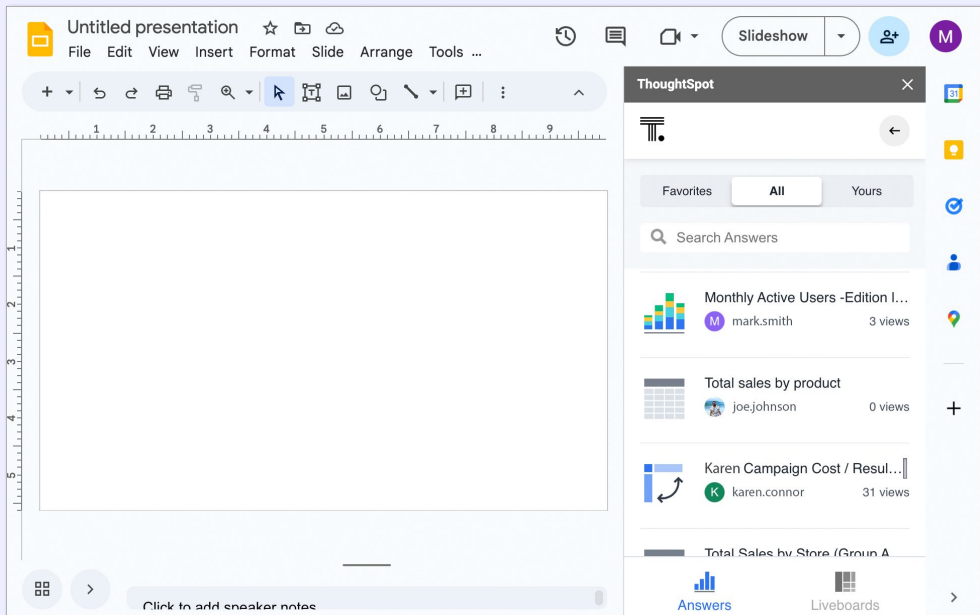
Progressive Model filters Beta

apply_on_tables

Use this property to define on which tables the filter will be applied. When used, any search using a column from that table will include the filter. Searches on other tables within the Model will not include the filter.

Orgs support for ThoughtSpot plug-ins

- **Microsoft PowerPoint add-in:** Orgs functionality enabled by default
- **Google Slides add-on:** to enable Orgs, please contact ThoughtSpot support



Query tags for Snowflake connections



- You can now set up **query tags** on your **Snowflake** connection to allow you to filter on users, groups, or other ThoughtSpot variables when auditing the Snowflake query logs.
- To configure query tags, enter the Key **query_tag** and either a static Value or a variable.
- For example, you could add a variable Value of **ts_username** to allow you to filter on the query tag and see which ThoughtSpot users ran which queries.

How to

MCP - walkthrough and demo



What is MCP - Model Context Protocol

- **MCP is an open protocol that standardizes how applications provide context to LLMs.**
- **Like a USB-C port for AI applications.**
- **As USB-C provides a standardized way to connect your devices to various peripherals and accessories.**
- **Similarly, MCP provides a standardized way to connect AI models to different data sources and tools.**

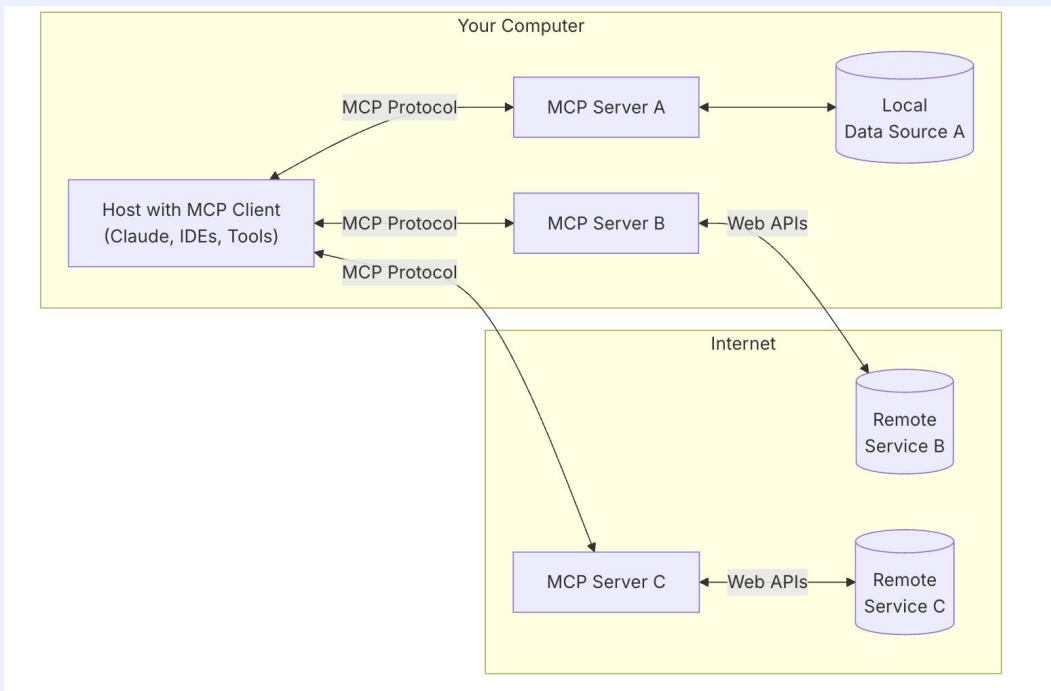
Why MCPs?

MCP helps you build agents and complex workflows on top of LLMs. LLMs frequently need to integrate with data and tools, and MCP provides:

- **A growing list of pre-built integrations that your LLM can directly plug into**
- **The flexibility to switch between LLM providers and vendors**
- **Best practices for securing your data within your infrastructure]**

MCP Architecture

At its core, MCP follows a client-server architecture where a host application can connect to multiple servers:



Components of Architecture

- **MCP Hosts:** Programs like Claude Desktop, IDEs, or AI tools that want to access data through MCP
- **MCP Clients:** Protocol clients that maintain 1:1 connections with servers
- **MCP Servers:** Lightweight programs that each expose specific capabilities through the standardized Model Context Protocol
- **Local Data Sources:** Your computer's files, databases, and services that MCP servers can securely access
- **Remote Services:** External systems available over the internet (e.g., through APIs) that MCP servers can connect to

ThoughtSpot MCP Server

- **Most analytics platforms are stuck in the past**
 - **Forcing you to context-switch between your agents and separate BI tools to get data insights**
- **You can effortlessly bring the full power of ThoughtSpot's agentic analytics directly into any AI agent, application, or platform that supports MCP**
 - **Eliminating context switching and delivering insights exactly where your teams work, including Claude, ChatGPT, Gemini, or any AI agent, application, or platform that supports MCP**

Ground your AI agents in your business reality

- **Grounding all AI insights in our industry-leading agentic semantic layer - Data Augmented Generation (DAG)**
- **Analyzes data enriched with your institutional knowledge about**
 - **What metrics mean**
 - **How they should be calculated**
 - **What context makes them meaningful for your business decisions**
- **Semantic grounding means you can trust the insights your agent provides,**
 - **Knowing they are built on the same reliable foundation that powers your existing analytics workflows**

Governance and Security

- **Leverages the OAuth 2.1 protocol**
 - Ensuring that all the permissions and access controls you've already established in ThoughtSpot are automatically respected when your agents access data.
- **While enabling powerful new AI-driven workflows, your**
 - **Governance policies**
 - **User permissions**
 - **Access**
 - **Security protocols remain intact**
- **ThoughtSpot's Agentic MCP Server is securely hosted and accessible with just a URL**

Appendix

Data Security Claude Desktop

- I would like to input sensitive data into free Claude.ai, or my Pro/Max account. Who can view my conversations?
- By default, we will not use your prompts and conversations from Free Claude.ai, Pro, or Max plans to train our models. There are two instances in which we may use your prompts and conversations to train our models: (1) if you give us explicit permission by submitting feedback through the thumbs up/down feature or by reaching out to us with a request, and (2) where your prompts and conversations are flagged for trust and safety review, we may use or analyze those conversations to improve our ability to detect and enforce Usage Policy violations, including to train trust and safety classifiers in order to make our services safer. Only a limited number of staff members have access to conversation data and they will only access this data for explicit business purposes.

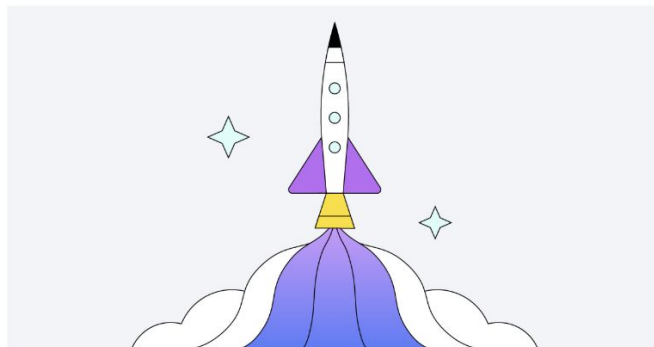
A top-down view of a workspace. A person's hand is on a silver laptop. A black microphone on a stand is positioned above the laptop. A smartphone is on the right. A white cup of coffee sits on a cork coaster. Papers and a pen are on the left. The text "What's coming & next steps" is overlaid in the center.

What's coming & next steps

SpotGuide

Welcome to SpotGuide!

SpotGuide is your go-to hub for best practices, expert insights, and practical recommendations curated by ThoughtSpot's professional services and customer success teams. Here, you'll find everything you need to implement ThoughtSpot effectively, drive adoption, and maximize the value of your investment. Dive into the wealth of resources and strategies to help you confidently achieve your business goals.

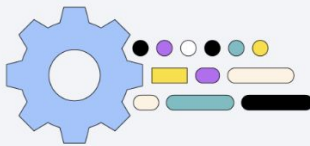


Onboarding & Implementing ThoughtSpot



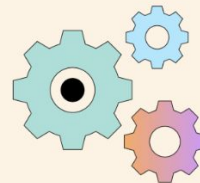
Defining a Use Case

Learn how to document the business context, challenges, success criteria, and the business user questions to be answered.



Access Controls and Security

Establish a strong security model to ensure effortless user access to necessary information, while also preventing unauthorized access and protecting security.



Data Security Field Guide

Learn about security controls, user frameworks, and best practices for data security, including scenarios, use cases, examples, and illustrations of data security governance.

Welcome to ThoughtSpot University

Learn anytime, anywhere. ThoughtSpot University is your central hub for all things training. Take on-demand, self-paced eLearning or register for instructor-led training classes and certifications.

[Get started](#)

Self-paced eLearning

Our self-paced learning paths help guide and prioritize your ThoughtSpot learning experience.

[Explore learning paths →](#)

Instructor-led Training

Attend virtual and in-person instructor-led classes run by the best instructors in the business.

[Find a class →](#)

Certification

Demonstrate your knowledge of ThoughtSpot through our self-serve certification platform.

[Get certified →](#)

Agentic Analytics Summit ON DEMAND!



Agentic Analytics Summit On Demand

Jul 9, 2025 at 10:00 AM EEST

On Demand Campaign - Virtual

All the highlights of the day, including content, speaker sessions, demos, and interviews with custo...

ThoughtSpot | snowflake

WEBINAR

When it comes to AI, trust is the ultimate output

July 16, 8am PT

Register now



How to mitigate hallucination & bias in AI

Jul 16, 2025 at 6:00 PM EEST

Virtual event (webinar)

See what it takes to make AI accurate and trustworthy

Events for August



Podcast: What Boards Care About Most When It Comes to AI

Podcast

Dr. Cindy Gordon ICD.D joins Cindi Howson.

QUICK LINKS:

[LinkedIn](#) | [Twitter](#) | [Landing page](#)

Podcast



On-Demand Webinar: Accelerate your AI analytics roadmap today...

Virtual Event: Webinar

QUICK LINKS:

[Landing Page](#) | [Social](#) | [PG Kit](#) | [Reg. report](#) | [SFDC Campaign](#)

Landing page



On-Demand Webinar: How to mitigate hallucination & bias in AI

Virtual Event: Webinar

QUICK LINKS:

[Landing page](#) | [Social](#) | [PG Kit](#) | [Reg. Report](#) | [SFDC Campaign](#)

Landing Page

August 28th

INSIGHTS HOUR 2025

