

ThoughtSpot Insight Hours

April, 2025



Speakers



Paul Froggatt

Director, Technical
Architects
ThoughtSpot



Eliza Dee

Customer Success Manager
ThoughtSpot
[Host](#)



Aditi Dani

Customer Success Manager
ThoughtSpot



Pinelopi Chamaleli

Senior Sales Engineer
ThoughtSpot

Three pillars of **Insights Hours**

**Product
spotlight**

**How-to
ThoughtSpot**

**Community
thread**

- Hosted **last Thursday of every month** by ThoughtSpot's GTM team
- Register for **one or all sessions**
- Ask your questions using Q&A for the **Community thread** discussions

Agenda

01 Introductions

Hello from speakers and what we'll cover today

02 Release highlights for 10.8 ci release

Pinelopi Chamaleli

03 Analyst Studio - latest updates

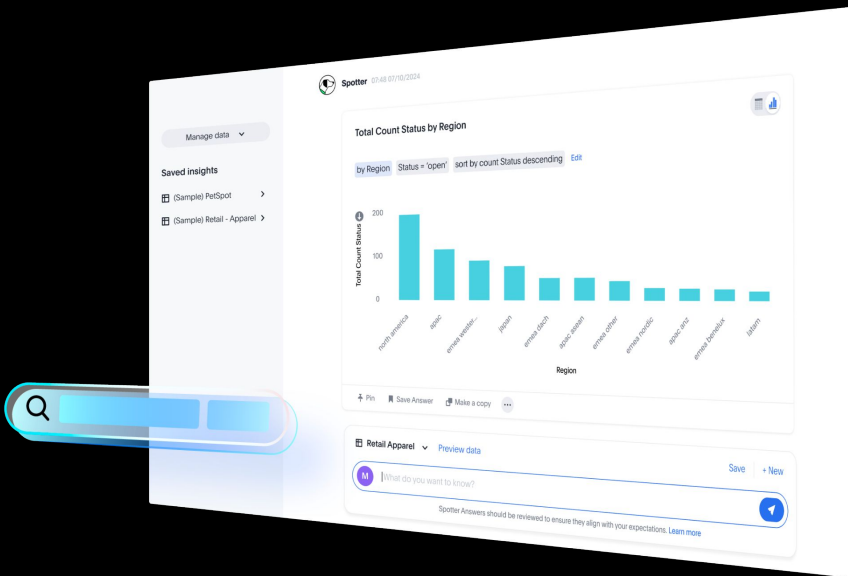
Aditi Dani

04 How to ThoughtSpot - Search indexing

Paul Froggatt

05 Wrap up & next steps

Eliza Dee



NEW

10.8 cl feature release highlights



Features

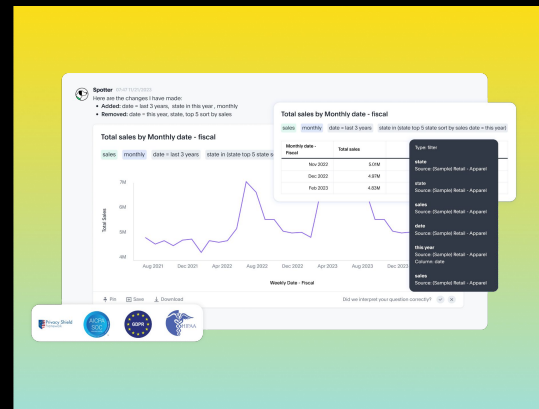
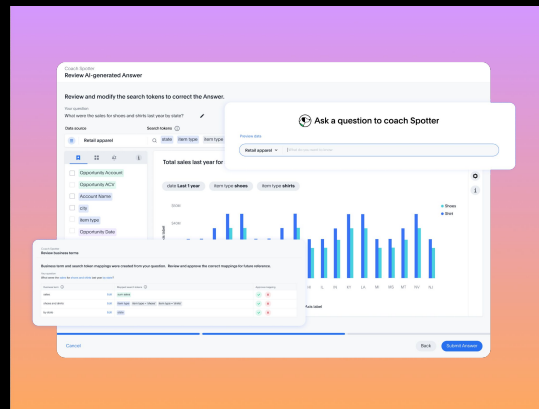
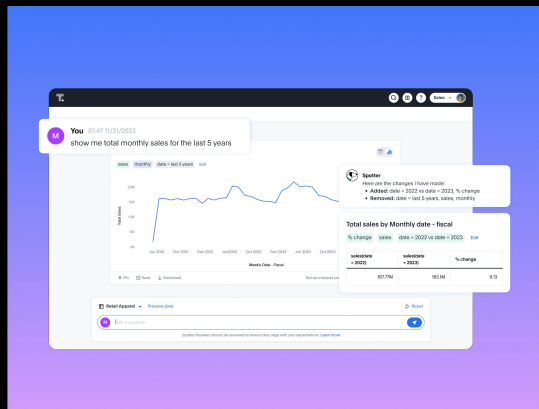
- Help and Support features (released gradually)
- Parameters in column names in charts and tables (GA in 10.8)
- Blended axes in pivot table charts (GA in 10.8)
- Alerts by Attribute (EA in 10.8)
- KPI chart New Experience (GA in 10.8)
- Number formatting on attributes (Beta in 10.8)
- Override null or empty values with a custom value (Beta in 10.8)
- Create your own charts with Muze Studio (Beta in 10.8)
- Column name and description aliasing for localisation (Beta in 10.8)
- Cover pages in Liveboard PDF Export
- Spotter shortcuts (EA in 10.8)
- Migrate Spotter feedback using TML (GA in 10.8)
- Spotter Conversations Liveboard Improvements (GA in 10.8)
- CSS Theme builder playground (live Beta)
- Mobile Embed SDKs
- MFA with IAMv2 for Local Authentication

NEW

Analyst Studio - latest updates



Analyst Studio Updates



Scheduling datasets at Instance level

Availability of hosting Analyst Studio in EU region

Python libraries upgrade

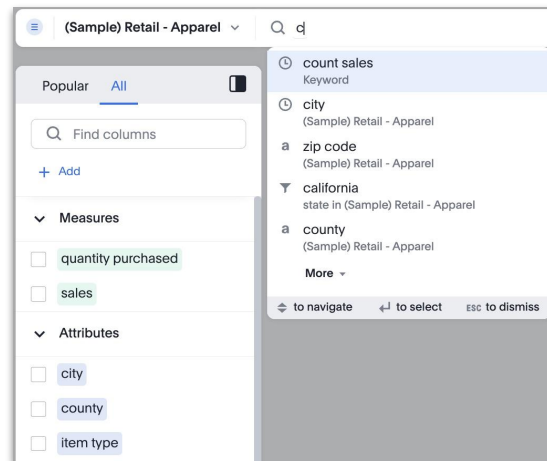
How to

How to ThoughtSpot: Search Indexing



Search Indexing Overview

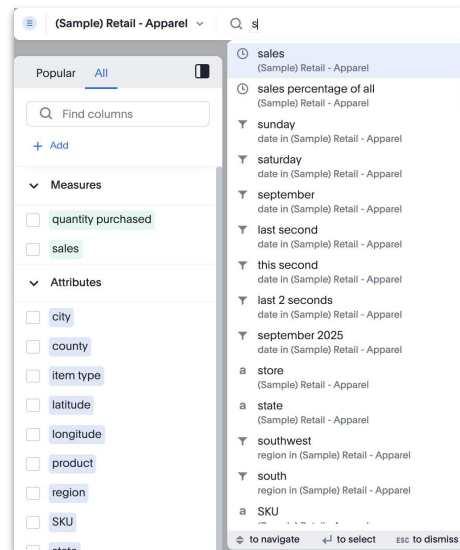
- What is the purpose of Search Indexing?
 - Allows users to easily find data they are searching for, via suggestions
 - Note, this has nothing to do with database indexing and query performance
- How are Search Indexes Built?
 - A background process to periodically index the **metadata** (e.g. columns names, synonyms names etc.) and optionally the values from the **data** in your attribute columns (excluding DATES)
- When are the Search Indexes built?
 - Automatically after an Upgrade, and periodically thereafter
 - When adding a new table/column, this is configurable
 - When adding/changing Row Level Security rules to a table
 - When changing the index type from DONT_INDEX to something else
- How often and at what time are the Search Indexes rebuilt?
 - By default, every 24 hours following the last scheduled Search Index build (or the last unscheduled restart of the search index process) - this is configurable



How are Search Indexes used

When a user types into the Search Bar suggestions are provided for:

- Column names
- Synonym names
- Formula names
- Column data values
- Formula data values
- Keywords

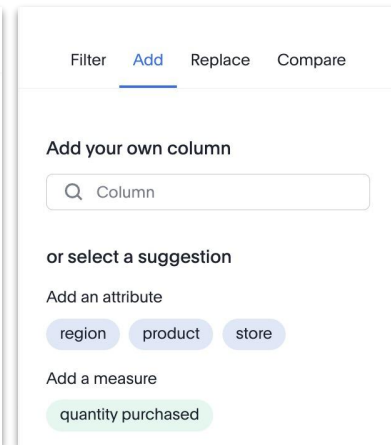
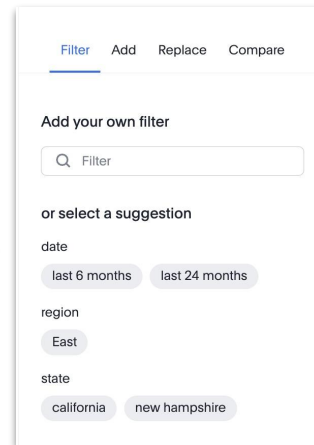
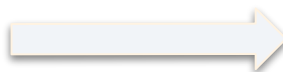


Without Search Indexes a user would need to know which column contained which exact value and specify a filter such as:

`product = 'andorra 1/4 zip jacket'`

When using Explore, suggestions are provided for:

- Column filters
- Adding columns
- Replacing columns
- Comparisons



Are there different types of Search Indexes?

Yes, the Index Type is specified at the column level within a table

- Consider a column where there are 4 values:
 - ThoughtSpot
 - Thought
 - Spot
 - Thought Spot
- If you search for **sp**, depending on the INDEX TYPE, the column value search result suggestions will vary as below:

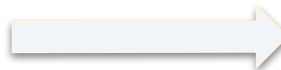
DONT_INDEX	No Suggestions - because no Search Index is built
PREFIX_ONLY	Spot
PREFIX_AND_WORD_SUBSTRING	Spot, Thought Spot
PREFIX_AND_SUBSTRING	Spot, Thought Spot, ThoughtSpot
DEFAULT	Spot, Thought Spot, ThoughtSpot

The **DEFAULT** behavior is to:

- Use PREFIX_AND_SUBSTRING for short values (30 characters or less)
- Use PREFIX_ONLY for long values and free-form text (greater than 50 words)

If a column has >100,000 unique values and the index type is DEFAULT, it is not indexed

If a column has >10 million unique values and the index type is NOT DEFAULT, it is not indexed



Are suggestions from Search Indexes ranked or prioritised?

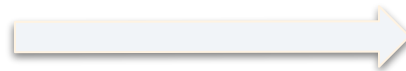
- Column name Search suggestions are ordered based on:
 - Historical usage (UBR - Usage Based Ranking)
 - The defined column INDEX PRIORITY (1-10)
- By default each column has an Index Priority of 1
 - This means suggestions that match the names of different columns are all ranked equally
 - The Higher PRIORITY the higher the ranking
 - To elevate a column name in the suggestion list, increase the INDEX PRIORITY
- Data value Search suggestions are ONLY ordered based on:
 - Historical usage (UBR - Usage Based Ranking)



INDEX PRIORITY
1
2

Can you alter Search Indexes at the Worksheet/Model layer?

- Worksheets/Models inherit the search indexes from the table columns that they use
- For each column in the worksheet/model you can:
 - Control whether data value search suggestions should be provided
 - Override the column name INDEX PRIORITY set at the table/column level
- For each non-DATE attribute formula in the worksheet/model you can:
 - Control whether data value search suggestions should be provided, toggling to YES will cause a Search Index (type DEFAULT) to be created for the formula
 - Set the formula name INDEX PRIORITY



SUGGEST VALUES IN SEARCH	
No	<input type="checkbox"/>
Yes	<input checked="" type="checkbox"/>



INDEX PRIORITY
1
2

How are data value Search Indexes built?

Data value Search Indexes are built by running Sampling and Indexing SQL queries

- For the columns with indexing enabled

Sampling:

- 2 SQL queries per indexed column
 - 1 SQL query to get an approximate unique count
 - 1 SQL query to get 1000 random sample values
 - This helps to determine whether to use prefix only or include word prefixes
 - These SQL queries are marked with the comment “task: SAGE_SAMPLING”

Indexing

- 1 SQL query to get all unique values for the column
 - These SQL queries are marked with the comment “task: SAGE_INDEXING”



```
SELECT APPROX_COUNT_DISTINCT("ta_1"."THOROUGHFARE_NAME") "ca_1"
FROM "UNIVERSITY"."PUBLIC"."SITES" "ta_1"
/* type: COLUMN,
id: {"id":"2148fdc1-e099-4dee-9d1c-fc495807446f","name":
:"THOROUGHFARE_NAME","owner":"efc97cae-e49c-4345-b326
-068b3b8643bf","type":"LogicalColumn"},
vizId: ,
userId: 0f0dd0f7-7411-4195-a4aa-0dc6b58413c9,
requestId: 230b8f4c-1f4d-450f-83ba-91fadf1cc91d,
tsQueryId: 32cbac86-293d-4436-bdf4-699cd2c9a13d,
clusterId: dbb645c9-b6b7-11ee-a180-ff95c,
task: SAGE_SAMPLING*/
```



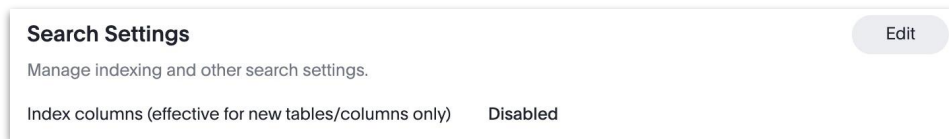
```
SELECT
"ta_1"."THOROUGHFARE_NAME" "ca_1",
'All' "ca_2",
TRUE "ca_3"
FROM "UNIVERSITY"."PUBLIC"."SITES" "ta_1"
GROUP BY "ca_1"
LIMIT 1000
/* type: COLUMN,
id: {"id":"2148fdc1-e099-4dee-9d1c-fc495807446f","name":
:"THOROUGHFARE_NAME","owner":"efc97cae-e49c-4345-b326
-068b3b8643bf","type":"LogicalColumn"},
vizId: ,
userId: 0f0dd0f7-7411-4195-a4aa-0dc6b58413c9,
requestId: 230b8f4c-1f4d-450f-83ba-91fadf1cc91d,
tsQueryId: f4106bdf-461f-41ef-82cb-8528955f3813,
clusterId: dbb645c9-b6b7-11ee-a180-ff95c,
task: SAGE_SAMPLING*/
```



```
SELECT
"ta_1"."THOROUGHFARE_NAME" "ca_1",
'All' "ca_2",
TRUE "ca_3"
FROM "UNIVERSITY"."PUBLIC"."SITES" "ta_1"
GROUP BY "ca_1"
/* type: COLUMN,
id: {"id":"2148fdc1-e099-4dee-9d1c-fc495807446f","name":
:"THOROUGHFARE_NAME","owner":"efc97cae-e49c-4345-b326
-068b3b8643bf","type":"LogicalColumn"},
vizId: ,
userId: 0f0dd0f7-7411-4195-a4aa-0dc6b58413c9,
requestId: 2ad11f67-964d-4a66-ad70-074467586048,
tsQueryId: cb428fc4-4de8-44af-a87e-3c6a560eae97,
clusterId: dbb645c9-b6b7-11ee-a180-ff95c,
task: SAGE_INDEXING*/
```

Can you configure Search Indexing activities?

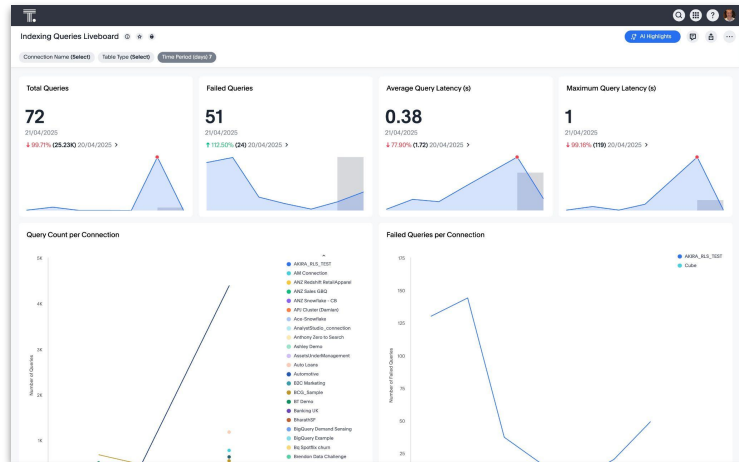
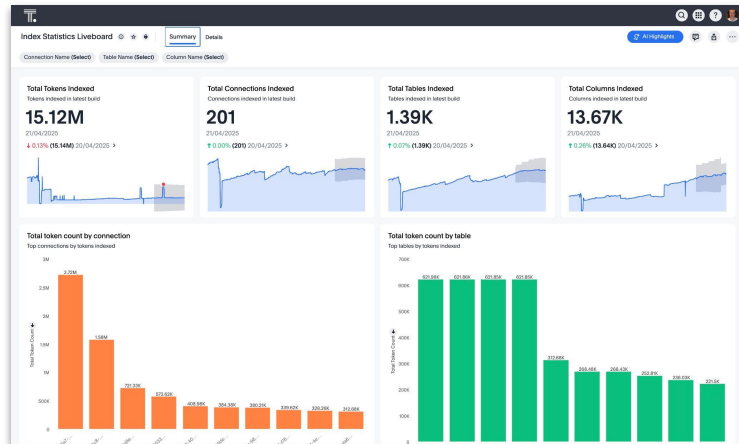
- By DEFAULT search indexing is enabled for new tables/columns you connect to
- You can DISABLE search indexing for new tables/columns you connect to via:
 - Admin -> Application Settings -> Search & SpotIQ



- You can DISABLE search indexing
 - For a column by setting INDEX TYPE to DONT_INDEX
 - For the entire system by raising a support case
- You can request a change to the frequency of the Search Index builds
 - Default is every 24 hours
 - Can increase or more often decrease that frequency
 - Can configure specific days you want them to be built
 - Raise a support case to change this
- You can specify when the scheduled Search Index builds occur
 - Define a time window within which the builds can start
 - Raise a support case to change this

How can you monitor Search Indexing queries?

- There are 2 out-of-the-box Search Indexing Liveboards
- Index Statistics Liveboard
 - Contains information about the volume of tables/columns indexed
- Indexing Queries Liveboard
 - Contains information about the indexing queries, failures and performance



A top-down view of a workspace. A person's hand is on a silver laptop. A black microphone on a stand is positioned above the laptop. A smartphone is on the right. A white cup of coffee sits on a cork coaster. Papers and a pen are on the left. The text "What's coming & next steps" is overlaid in the center.

What's coming & next steps

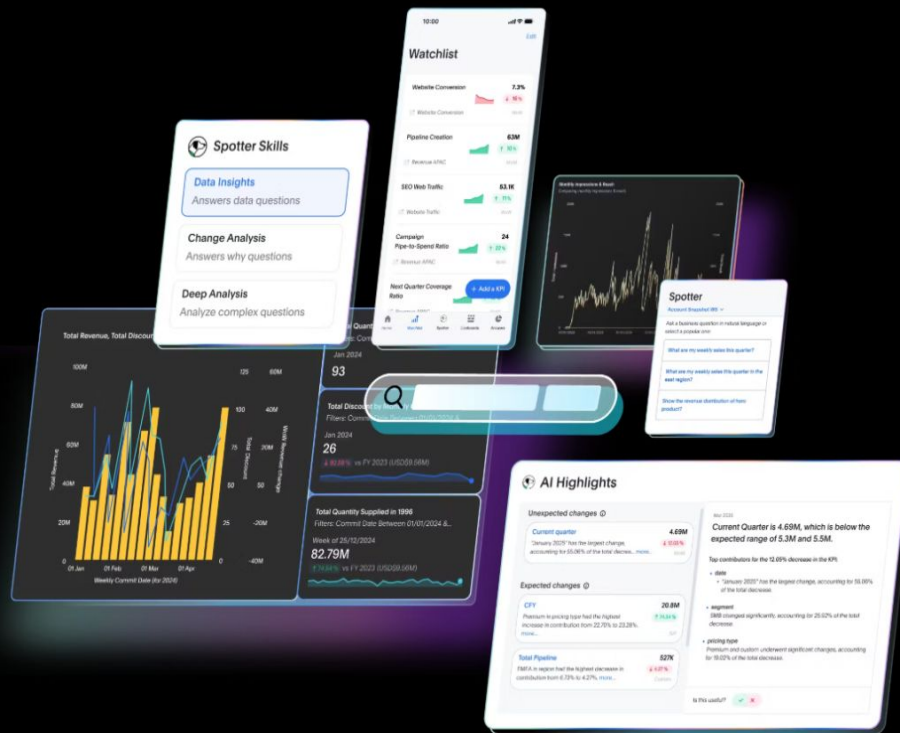
PRODUCT SPOTLIGHT SERIES

AI is the new BI

See how ThoughtSpot is redefining BI in the era of AI, and finally making it possible to experience self-service analytics the way it was always meant to be.

April 10 Livestream
8 AM PST | 11 AM ET | 4 PM GMT

Register now



The future beyond Tableau

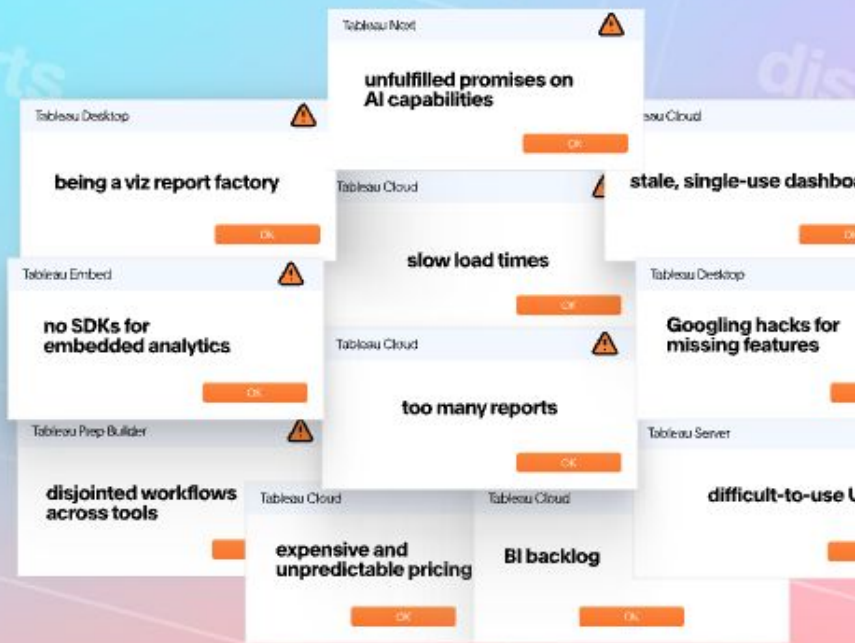
See how Matillion ditched dead-end dashboards for on-demand insights

Upcoming sessions:

8AM PST
Apr. 24

9AM BST
Apr. 30

12PM AEST
May. 7

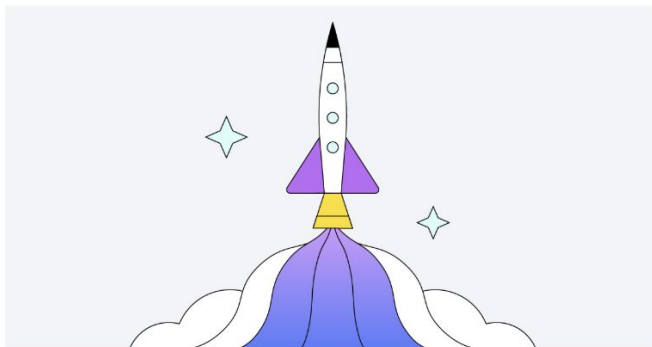


WEBINAR

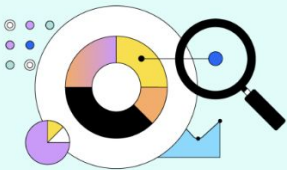
SpotGuide

Welcome to SpotGuide!

SpotGuide is your go-to hub for best practices, expert insights, and practical recommendations curated by ThoughtSpot's professional services and customer success teams. Here, you'll find everything you need to implement ThoughtSpot effectively, drive adoption, and maximize the value of your investment. Dive into the wealth of resources and strategies to help you confidently achieve your business goals.

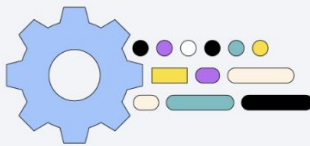


Onboarding & Implementing ThoughtSpot



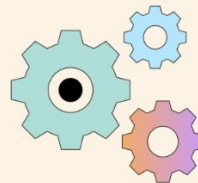
Defining a Use Case

Learn how to document the business context, challenges, success criteria, and the business user questions to be answered.



Access Controls and Security

Establish a strong security model to ensure effortless user access to necessary information, while also preventing unauthorized access and protecting security.



Data Security Field Guide

Learn about security controls, user frameworks, and best practices for data security, including scenarios, use cases, examples, and illustrations of data security governance.

Welcome to ThoughtSpot University

Learn anytime, anywhere. ThoughtSpot University is your central hub for all things training. Take on-demand, self-paced eLearning or register for instructor-led training classes and certifications.

[Get started](#)

Self-paced eLearning

Our self-paced learning paths help guide and prioritize your ThoughtSpot learning experience.

[Explore learning paths →](#)

Instructor-led Training

Attend virtual and in-person instructor-led classes run by the best instructors in the business.

[Find a class →](#)

Certification

Demonstrate your knowledge of ThoughtSpot through our self-serve certification platform.

[Get certified →](#)

See you next month!

May 29th
INSIGHTS HOUR 2025

