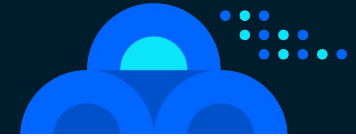


# Embedded analytics at enterprise-scale



**Latha Govada Nekkhalapudi**  
Director, Enterprise BI  
Capital One

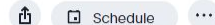


**Callie Cobbs**  
Principal BI  
Solutions Architect  
Chick-fil-A



**Karl Karl Riddett**  
Solution Lead  
Interworks

## InterBurger Liveboard DEMO

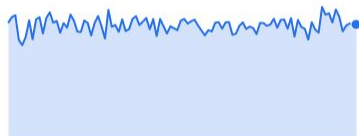


Prior Day Comp Sales %

**4.27%**

04/12/2022

↓ 0.07% (4.27%)



Weekly Comp Sales % Trend

New KPI visual

**4.3%**

Week of 04/11/2022

↓ 3.7% (4.4%) WoW



MTD Comp S...

Explore



**4.43%**

Apr 2022

↑ 5.71% (4.19%) MoM



YTD Comp Sales %

**4.26%**

2022

↓ 1.61% (4.33%) YoY



Total Item Net Sales Amt

Total Sales for Chicken Sandwiches

**\$10.21M**

Dec 2021

↑ 3.37% (\$9.88M) MoM



Total Item Net Sales Amt

Total Sales for Chicken Sandwiches

**119,882,434.77**

Comp Sales %(drive-thru)

Comparing Drive-Thru vs. Dine-In Comp Sales for...

**0.4%**

Prior Day Comp Sales by Daypart

Right-click to drill into data



## InterBurger Search

### Data

#### Sources

Find columns

#### InterBurger Restaurant Dall...

- AREA
- AREA LEADER NAME
- BUSINESS DATE
- Check Avg \$
- CITY NAME
- Comp Check %
- ✓ Comp Sales %
- Comp Trans %
- CONCEPT NAME
- COUNTRY NAME
- COUNTY NAME
- ✓ DAYPART NAME
- ✓ DESTINATION
- DISTRIBUTION CENTER
- DISTRICT
- DISTRICT LEADER NA

+ Add columns

NET SALES TY Comp Sales % DAYPART NAME DESTINATION year to date

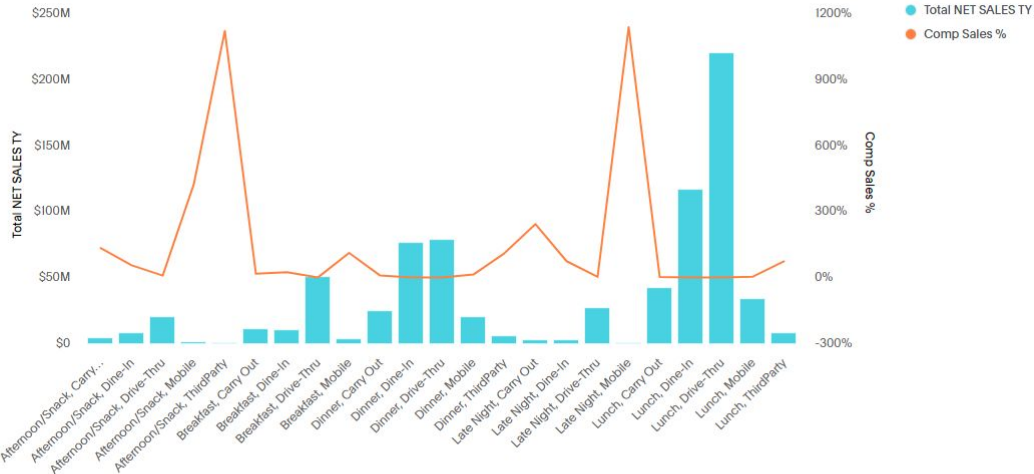
Go

Navigation icons

### Total NET SALES TY, Comp Sales % by DAYPART NAME, DESTINATION

Add description

BUSINESS DATE >= 01/01/2022 < 04/28/2022



Showing 23 of 23 data points

DAYPART NAME & DESTINATION

### Edit chart

Configure

Settings

X-axis

DAYPART NAME

DESTINATION

Y-axis

Total NET SALES TY

Comp Sales %

Slice with color

Drag a Column

Not visualized

Drag a Column

# Configurable Menu, Layout and Style

The screenshot shows a web browser window with the URL `restaurant.curator.interworks.com/tssearch/interburger-search`. The page features a dark brown navigation bar with the **InterBurger** logo and several menu items: Home, Sales, Geos, ThoughtSpot, Documents, and COVID-19 Seating Plan. A search bar is partially visible on the right.

A configuration panel is overlaid on the page, containing a "Data" section with a left arrow icon. Under "Sources", there is a search box labeled "Find columns" and a dropdown menu for "InterBurger Restaurant Dail..." with the sub-item "ARFA".

Below the configuration panel, a search filter is applied: "NET SALES TY" and "Comp Sales %" are highlighted in green, and "DAYPART NAME" is highlighted in blue. The main content area displays the title "Total NET SALES TY, Comp Sales % by DAY" and the instruction "Add description". A date range filter is shown in a light blue box: "BUSINESS DATE >= 01/01/2022 < 04/28/2022".

# Easy to manage backend interface - No Code required



Search



## Content



Navigation

Reorder Navigation

Pages

Files

Fonts

Notices

Keywords

Navigation

Update link

Link Type

ThoughtSpot Liveboard



ThoughtSpot Liveboard

InterBurger Liveboard DEMO



InterBurger Liveboard DEMO

Open link in



In the same tab



In new tab



## Welcome to InterBurger!

To simulate real world permissions, this demo offers two distinct experiences. Please choose your user experience below.



### Choose One to Get Started



### Corporate

- Company overview
- Company-wide daily, weekly, & yearly trends
- Restaurant Locator
- Menu and drive thru analytics
- Operations overview



Corporate Experience

### Franchisee

- Specific Restaurant Overview
- Franchise-specific daily, weekly, and yearly trends.
- Menu and drive thru analytics
- Operations overview
- Stats for franchise region



Franchisee Experience

**BEYOND.2022**

 ThoughtSpot.



**Chick-fil-A**

